

CITY OF NOVI FUTURE LAND USE MAP

2016 Edition with 2023 Amendment

Legend

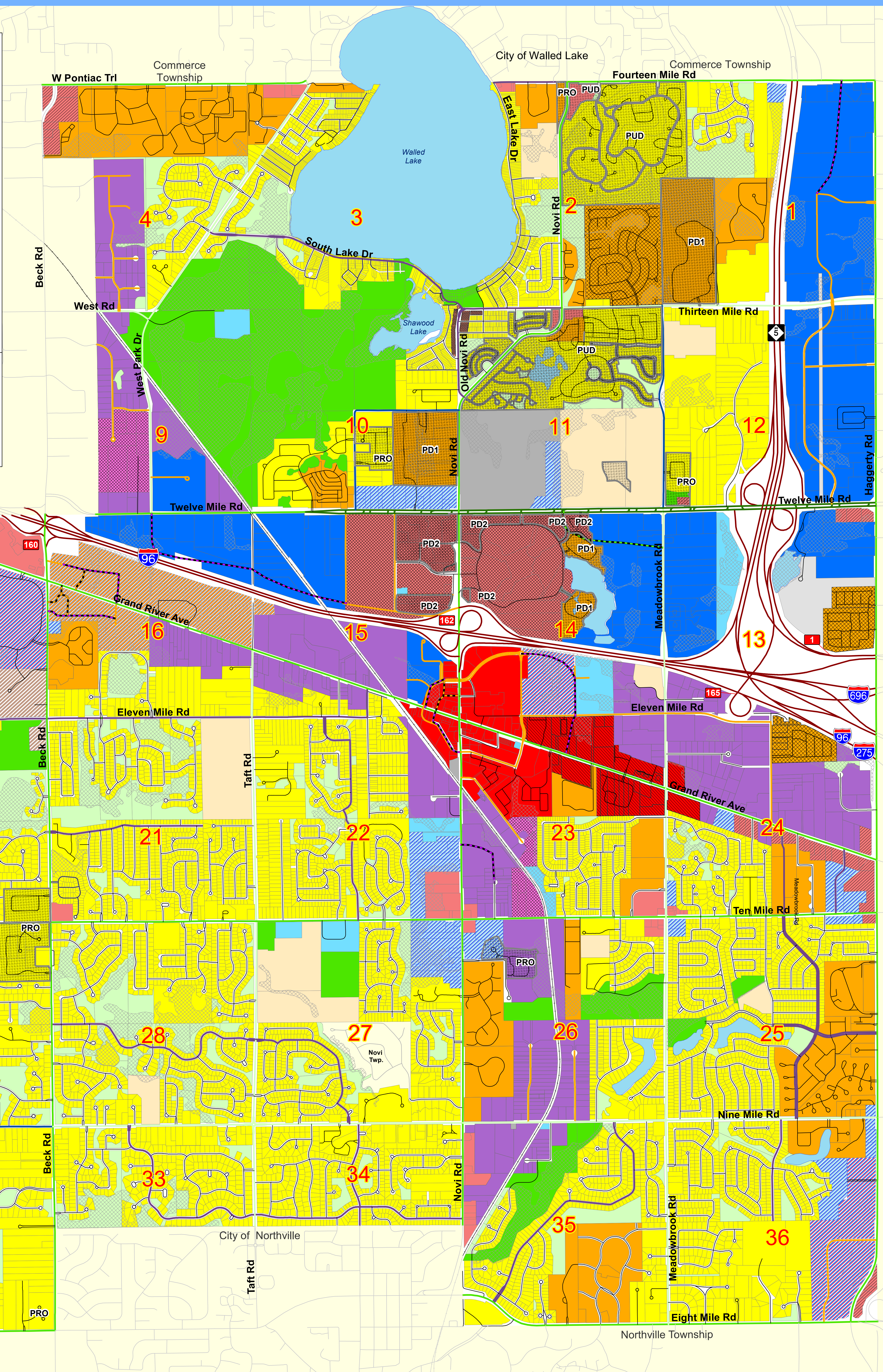
Land Use Classifications

Single-Family Residential	Community Commercial	Wetlands Over 5 Acres
PUD/ PD1/ PD2/ PRO	Regional Commercial	Lakes
Multiple-Family Residential	City West	
Manufactured Home Residential	Pavilion Shore Village	
Suburban Low-Rise	Town Center Commercial	
Community Office	Town Center Gateway	
Office, Research, Development and Technology	Educational Facility	
Office Commercial	Public Park	
Industrial, Research, Development and Technology	Private Park	
Heavy Industrial	Cemetery	
Local Commercial	Utility	

0 0.125 0.25 0.5 0.75 1
Miles
One Inch is about 0.4 Miles
Map Scale 1 : 24,000

Community Development Department
45175 Ten Mile Road
Novi, MI 48375
(248) 735-0415

Map Authors:
Jon Gartha, GIS Technician, Integrated Solutions
Sri Komaragiri, Planner, Comm. Development
Lindsay Bell, Planner, Comm. Development



THOROUGHFARE CLASSIFICATION

- Freeway
- Major Arterial
- Arterial
- Minor Arterial
- Non-Residential Collector
- Residential Collector
- Local Street
- Scenic Drive Road
- Proposed Non-Residential
- Proposed Residential Collector
- Proposed local street

CITY OF NOVI 2016 MASTER PLAN UPDATE

We hereby certify that on July 26, 2017 the City of Novi Planning Commission formally adopted this updated map and accompanying text, maps and charts, which are referred to in the document entitled "City of Novi 2016 Master Plan Update" pursuant to the requirements of the Michigan Planning Enabling Act, Public Act 33 of 2008.

Mark A. Lehson
Chairperson

M.J. Lynch
Secretary

NOTES

- This map is intended to show generalized land use and is not intended to indicate parcel size, shape or dimension. These uses reflect future land use recommendations and do not imply that short range zoning is appropriate. Please contact Plan Review Center at Community Development Department at 248-347-0475 for more details.
- The "Environmental Areas" category includes regulated wetlands of 5 acres or more. Small regulated wetlands were not shown due to the scale of the map. Other natural resources are more fully described in the Master Plan text.
- The document entitled "City of Novi 2016 Master Plan Update" can be accessed online at www.cityofnovi.org
- Please refer to chapter 6: Future Land Use Plan to learn more about Future Land Use categories and descriptions.
- The 2023 Amendment includes the land swap between Novi Public Schools and the City of Novi.



CITY OF NOVI PLANNING COMMISSION

Novi Civic Center
45175 Ten Mile Rd
Novi, MI 48375
cityofnovi.org